

# Explosion Proof Linear fluorescent Fitting EVS zones 1,2,21 & 22



### Features

- Easy disconnect without wiring to remove the gear tray
- All components mounted on hinged and removable gear tray for easy maintenance
- Double central locking for ingress protection
- Automatic switch off on opening
- Includes accessories (cable gland, plugs & fixing brackets)

EVS fluorescent fitting with easy disconnect

### Approvals & certifications



### Specifications

Main body constructed of glass-reinforced polyester for high impact strength

UV protected polycarbonate diffuser to resist harsh environments

Electronic ballast 220-240 Vac / 50-60Hz

EOL (End of life) the ballast prevents the lamp cap at the end of lamp life cycle from overheating

Instant start

Wiring configuration: 5 wires  
3x entries M20

2x emergency versions (type: "EM" version 3h battery duration or "EMA" with 3h with automatic test and blackstart capabilities)

### Standards

<b>Approved to:</b>	EN 60079-0: General requirements
	EN 60079-1: Flameproof enclosure "d"
	EN 60079-31: Enclosure "t"
	EN 60079-7: Increased safety "e"
<b>ATEX Directive (2014/34/EU)</b>	LCIE 11 ATEX 3065X
	IEC Ex LCI 11.0053X
	Ex II 2 G
	Ex de IIC T4 Gb for -40°C to +60°C or Ex de IIC T5 Gb for -40°C to +35°C
	Ex II 2 D
	Ex tb IIIC T85°C Db IP66 for -40°C to +60°C
<b>EMC Directive (2014/30/EU)</b>	EN 55015: Conducted emission test and radiated emission test
	EN 61547: CEM immunity
	EN 61000-3-2: Harmonic current Emissions Class C
	EN 61000-3-3: Limitation of voltage changes and flickers
<b>Low voltage Directive (2014/35/EU)</b>	EN 60598-1: Luminaire general requirements and tests, including dielectric strength and isolation resistance
<b>Glow wire test:</b>	960°C
<b>Operating temperature:</b>	-20°C to +55°C EVS, -10°C to +50°C EVS EM & EVS EMA
<b>IP test:</b>	IEC 60529: IP66
<b>Impact protection index:</b>	IEC 62262: IK10

01 Easy disconnect to remove gear tray

02 UV protected polycarbonate diffuser

01

02

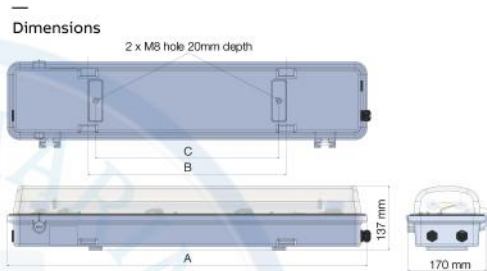


# Explosion Proof Linear fluorescent Fitting EVS zones 1, 2, 21 & 22



### EVS fluorescent fitting

- 5 wires
- Suitable for use in Zones 1, 2, 21, 22



### EVS 5 wires: Equipped with 1 cable gland & 2 plugs

Type For		Wiring Configuration	Light Rating W	Current A @ 230V	Dimensions mm			Weight kg
non armored cable	armored cable				A	B	C	
EVS120-0000	EVS120-D000	5 wires*	1 x 18	0.09	785	432	400	5.81
EVS140-0000	EVS140-D000	5 wires*	1 x 36	0.18	1370	900	700	8.60
EVS165-0000	EVS165-D000	5 wires*	1 x 58	0.26	1670	900	700	10.40
EVS220-0000	EVS220-D000	5 wires*	2 x 18	0.17	785	432	400	5.81
EVS240-0000	EVS240-D000	5 wires*	2 x 36	0.33	1370	900	700	8.60
EVS265-0000	EVS265-D000	5 wires*	2 x 58	0.48	1670	900	700	10.40



### EVS 5 wires through: Equipped with 2 cable glands & 1 plug

EVS120-B000	EVS120-E000	5 wires through**	1 x 18	0.09	785	432	400	5.81
EVS140-B000	EVS140-E000	5 wires through**	1 x 36	0.18	1370	900	700	8.60
EVS165-B000	EVS165-E000	5 wires through**	1 x 58	0.26	1670	900	700	10.40
EVS220-B000	EVS220-E000	5 wires through**	2 x 18	0.17	785	432	400	5.81
EVS240-B000	EVS240-E000	5 wires through**	2 x 36	0.33	1370	900	700	8.60
EVS265-B000	EVS265-E000	5 wires through**	2 x 58	0.48	1670	900	700	10.40

Note. \* For armored cable with 1 continuity plate. \*\* For armored cable with 2 continuity plates.

### Technical information

<b>Lamps</b>	Fluorescent Lamp (order separately) T8 bi-pin tube, lampholder G13, diameter 26mm - white industry 4000°K
<b>Photometric curve</b>	See page 182
<b>Power factor</b>	0.95
<b>Wiring Configuration</b>	5 wires
<b>Electrical protection class</b>	I
<b>Grounding system (NFC 15100):</b>	TNS, TNC, TT, IT neutral system
<b>Terminal block (spring)</b>	Jumped bar x2 terminal blocks 4mm <sup>2</sup> (rigid wire), 2.5mm <sup>2</sup> (flexible wire) Terminals supplied L1, L2, L3, N, PE (looping possible with one additional cable gland)

### Technical information

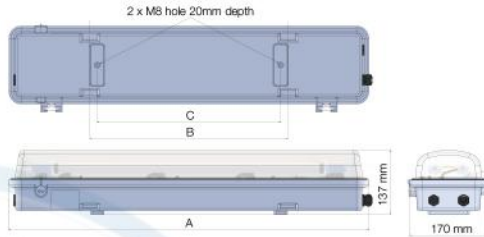
<b>Cable entries</b>	Three entries M20
<b>For non-armoured cable:</b>	Included two M20 nylon plugs (EX-M20) and one M20 nylon cable gland, diameter 6-12mm (EXCGM20S) and three nylon locknuts
<b>For armoured cable:</b>	Included continuity plate - two M20 nylon plugs (EX-M20) and one M20 nickel plated brass cable gland, diameter 6-12/ 8.5-16mm (EXN04MMC1K)
<b>Housing</b>	Glass reinforced reinforced polyester housing for high impact strength, UV protected polycarbonate diffuser to resistant to harsh environments, Painted steel gear tray & Stainless steel 316L insert
<b>Fixing (included with product)</b>	V015 - 2x Two zinc-plated steel brackets for ceiling mounting

# Explosion Proof Linear fluorescent Fitting EVS zones 1,2,21 & 22



3 wires: Equipped with 1 cable gland & 2 plugs

**Dimensions**



Type For		Wiring Configuration	Light Rating W	Battery h	Current A @ 230V	Dimensions mm			Weight kg
non armored cable	armored cable*					A	B	C	
EVS140EM-0000	EVS140EM-C000	3 wires	1 x 36	3h	0.18	1370	900	700	11.02
EVS165EM-0000	EVS165EM-C000	3 wires	1 x 58	3h	0.26	1670	900	700	13.40
EVS240EM-0000	EVS240EM-C000	3 wires	2 x 36	3h	0.33	1370	900	700	11.02
EVS265EM-0000	EVS265EM-C000	3 wires	2 x 58	3h	0.48	1670	900	700	13.40

Note. \* For armored cable with 1 continuity plate.

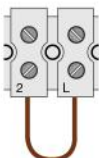
**Electrical Features**

General data	
<b>Lamps</b>	Fluorescent Lamp (order separately) T8 bi-pin tube, lampholder G13, diameter 26mm - white industry 4000°K
<b>Photometric curve</b>	See page 182
<b>Power factor</b>	0.95
<b>Wiring Configuration</b>	3 wires
<b>Battery</b>	Battery NiCd 7.2V 4Ah in flameproof case (Ex d) Lumen output in emergency mode (1 lamp lit) 3 hours: 18% for EVS140, EVS240 3 hours: 14% for EVS165, EVS265 Monitored by LED

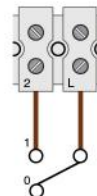
General data	
<b>Terminal block (screws plug in terminal block)</b>	4mm <sup>2</sup> (rigid wire), 2.5mm <sup>2</sup> (flexible wire) Terminals supplied L, N, PE (looping possible with one additional cable gland)
<b>Cable entries</b>	Three entries M20
<b>For non-armoured cable:</b>	Included two M20 nylon plugs (EX-M20) and one M20 nylon cable gland, diameter 6-12mm (EXCGM20S) and three nylon locknuts
<b>For armoured cable:</b>	Included continuity plate - two M20 nylon plugs (EX-M20) and one M20 nickel plated brass cable gland, diameter 6-12/ 8.5-16mm (EXN04MMC1K)
<b>Housing</b>	Glass reinforced reinforced polyester housing for high impact strength, UV protected polycarbonate diffuser to resist harsh environments, Painted steel gear tray & Stainless steel 316L insert
<b>Fixing (included with product)</b>	V015 - 2x Two zinc-plated steel brackets for ceiling mounting

**Emergency function diagrams**

Wiring provided by DTS Maintained Mode	Mains Supply	Tube	Battery
	ON	Lit	Charging
	OFF	Only emergency tube lit	Discharging



Switch between L/2 Non Maintained Mode *	Mains Supply	Tube	Battery
	ON	OFF	Charging
	OFF	Only emergency tube lit	Discharging



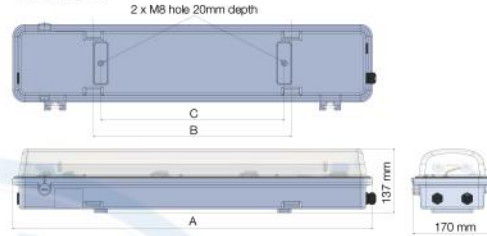
\* This table corresponds to the position 0 "open". If the switch is on position 1 "close", refer to the table on the left

# Explosion Proof Linear fluorescent Fitting EVS zones 1,2,21 & 22



5 wires: Equipped with 1 cable gland & 2 plugs

Dimensions



Type For		Wiring Configuration	Light Rating W	Battery h	Current A @ 230V	Dimensions mm			Weight kg
non armored cable	armored cable*					A	B	C	
EVS240EMA-0000	EVS240EMA-D000	5 wires	2 x 36	3h	0.33	1370	900	700	11.02

Note. \* For armored cable with 1 continuity plate.

### Electrical Features

<b>Lamps</b>	Fluorescent Lamp (order separately) T8 bi-pin tube, lampholder G13, diameter 26mm - white industry 4000°K
<b>Photometric curve</b>	See page 182
<b>Rated voltages</b>	Electronic ballast 220-240 Vac / 50-60Hz EOL (End of life) the ballast prevents the lamp cap at the end of lamp life cycle from
<b>Power factor</b>	0.95
<b>Wiring Configuration</b>	5 wires
<b>Battery</b>	Battery NiCd 6V 7Ah in flameproof case (Ex d) for EVS140, EVS240 Lumen output in emergency mode (1 lamp lit) 3 hours: 33% for EVS140, EVS240
<b>Emergency function diagrams</b>	Monitored by two LED

### Electrical Features

<b>Terminal block</b>	Terminals block up to 4mm <sup>2</sup> (rigid wire), 2.5mm <sup>2</sup> (flexible wire) Terminals supplied L1, L2, L3, LS, N, E, BS (looping possible with one additional cable gland)
<b>Cable entries</b>	Three entries M20
<b>For non-armoured cable:</b>	included two M20 nylon plugs (EX-M20) and one M20 nylon cable gland, diameter 6-12mm (EXCGM20S) and three nylon locknuts
<b>For armoured cable:</b>	included continuity plate - two M20 nylon plugs (EX-M20) and one M20 nickel plated brass cable gland, diameter 6-12/ 8.5-16mm (EXN04MMC1K)
<b>Housing</b>	Glass reinforced polyester housing for high impact strength, UV protected polycarbonate diffuser to resist harsh environments, Painted steel gear tray & Stainless steel 316L insert
<b>Fixing (included with product)</b>	V015 - 2x Two zinc-plated steel brackets for ceiling mounting

### Wiring provided by DTS

Maintained Mode	Mains Supply	Tube	Battery
	ON	Lit	Charging
	OFF	Only emergency tube lit	Discharging

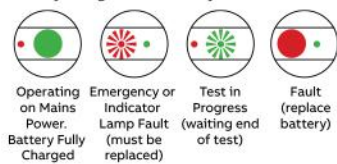
### Switch between LS/L1

Non Maintained Mode *	Mains Supply	Tube	Battery
	ON	OFF	Charging
	OFF	Only emergency tube lit	Discharging

\* This table corresponds to the position 0 "open". If the switch is on position 1 "close", refer to the table on the left

### Preventive maintenance mode

Battery charge - daily  
Emergency lamp during 1min - weekly  
Battery charge capacity during 1hr - quarterly  
Clear system test display  
Battery charge monitored by 2 LED



### Emergency function diagram - Blackstart mode

The EMA product contains 2 blackstart terminals. The blackstart mode consists in disconnecting the battery and so switching off the fitting. This mode is mainly used during maintenance. As soon as the maintenance is done, the main power ON and the blackstart terminals connected, the emergency fitting is ready to be used as the battery is not discharged.

### Switch between BS terminals

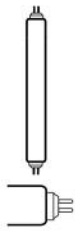
Mains Supply	Tube	Battery
ON	OFF	Charging
OFF	Only emergency tube lit	Discharging



This table corresponds to the position 0 "open".

# Explosion Proof Linear fluorescent Fitting EVS zones 1,2,21 & 22

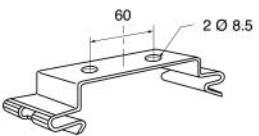


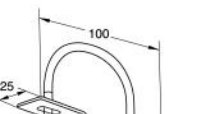
Bipin T8 fluorescent lamps	Type	Power W	Lumen output lm	Lampholder	Specifications
	TL18W	18	1250	G13	G13 - ø 26mm
	TL36W	36	3350	G13	Colour temperature: White industry 4000°K
	TL58W	58	5200	G13	CRI: > 80 lm/W: 65 to 93 Average operating life: 12000 hours

## Fixing accessories\*

Brackets	Type	Specifications
	V015	2 x pair of zinc plated steel for ceiling mounting (Included with product)
	V016	Stainless steel 316L brackets for ceiling mounting

Hook	Type	Specifications
	V024	2x Zinc plated steel suspension hook

Mounting bracket clip	Type	Specifications
	V014	2x Rapid ceiling mounting with stainless steel clip

Fixing bracket and flange	Type	Specifications
	V018	2x zinc plated steel pole mounted brackets for ø1"¼ & 1"½
	V019	2x zinc plated steel pole mounted brackets for ø2"
	V021	2x Stainless steel 316L pole mounted brackets for ø1"¼ & 1"½
	V022	2x Stainless steel 316L pole mounted brackets ø2"

\* Screws and locknuts supplied

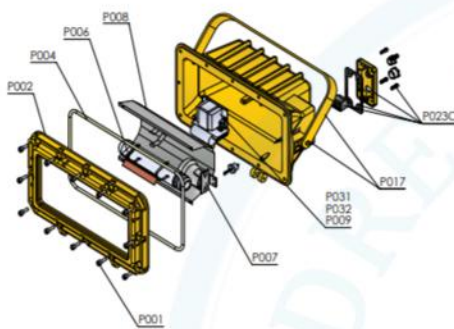
## Explosion proof Floodlight XSF, XQF, XEF - Zones 1, 2 & 21, 22



### Floodlight fittings - spare parts

XSF, XQF, XEF HPS, MH or Halogen floodlight fitting -  
zones 1, 2, 21 & 22

#### Spare parts



Type	Specifications
P001	Closing Screw for Floodlight (per 12)
P004	Gasket
P007	Lampholder E40 for floodlight
P008	Reflector for floodlight wide beam
P031150W23050	Ferromagnetic ballast 230Vac 50Hz - 1 capacitor - ignitor - fixing plate for floodlight XSF150
P031250W23050	Ferromagnetic ballast 230Vac 50Hz - 1 capacitor - ignitor - fixing plate for floodlight XSF250, XQF250
P031400W23050	Ferromagnetic ballast 230Vac 50Hz - 1 capacitor - ignitor - fixing plate for floodlight XSF400, XQF400
P009150W60	Ferromagnetic ballast 220Vac 60Hz for floodlight XSF150, XQF150
P032S15060	1 capacitor 18UF cable support - 220Vac 60Hz - for floodlight XSF150, XQF150
P009250W60	Ferromagnetic ballast 220Vac 60Hz for floodlight XSF250, XQF250
P032S25060	1 capacitor 25UF cable support - 220Vac 60Hz for floodlight XSF250, XQF250
P009400W60	Ferromagnetic ballast 220Vac 60Hz for floodlight XSF400, XQF400
P032S40060	2 capacitors 20UF cable support - 220Vac 60Hz for floodlight XSF400, XQF400
P010	Ferromagnetic ballast and capacitor for floodlight XSF400, XQF400
E008C	Gear tray support with fixing for optic and optic for floodlight XEF
P023C	Accessories for junction box in floodlight: terminal 2x6mm <sup>2</sup> + earthing terminal + cover gasket + cover + screw of cover
EXN04MLC2K	Kit M20 Exd Exe IIC Ex-td nickel plated cable gland for non armoured cable diameter 10-16mm, locknut, sealing gasket
EXN04MMC1K	Kit M20 Ex-d IIC Ex-e II Ex-td double compression nickel plated cable gland for armoured cable diameter inner 6-12 outer 8.5-16mm locknut, sealing gasket